



# Camden

at Berry Estates

[drhorton.com/sfl](http://drhorton.com/sfl)

D.R. Horton is equal housing opportunity builder. Pictures, photographs, features, colors, drawings, floor plans, square footages and sizes are approximate for illustration purposes only and will vary from the homes as built. All drawings are the artist's concept. Florida Certified General Contractor #CGC059394



Total A/C Sq. Ft.	2,837
Porch	27
Covered Lanai	193
3-Car Garage	620
<b>Total Sq. Ft.</b>	<b>3,677</b>

4 Bedrooms, 3.5 Bathrooms, Flex Room, 3-Car Garage





Elevation - "A"



Elevation - "B"

# Fraser

at Berry Estates

[drhorton.com/sfl](http://drhorton.com/sfl)



Pictures, photographs, features, colors, drawings, floor plans, square footages and sizes are approximate for illustration purposes only and will vary from the homes as built. All drawings are the artist's concept. Florida Certified General Contractor #CGC059394



4 Bedrooms, 3 Bathrooms, 3-Car Garage

Total A/C Sq. Ft.	2,533
Porch	20
Covered Lanai	200
3-Car Garage	643
Total Sq. Ft.	3,396





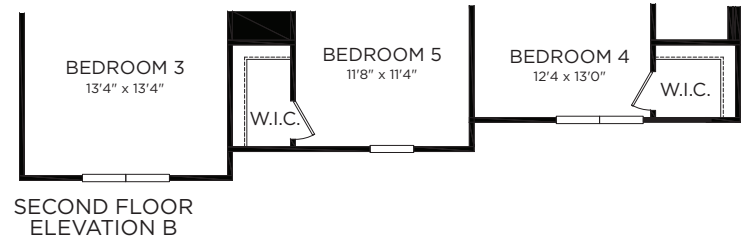
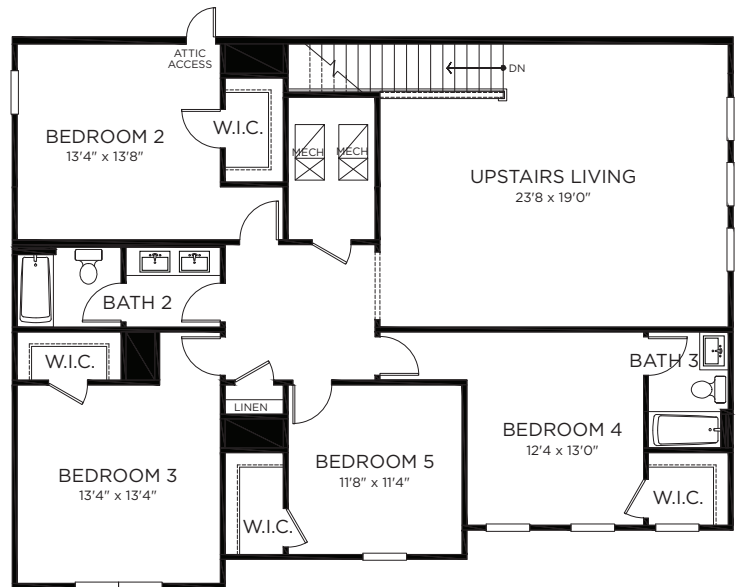
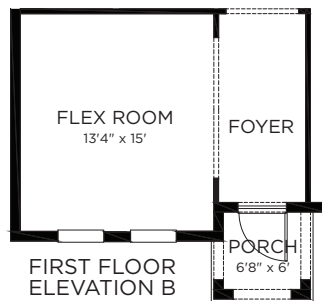
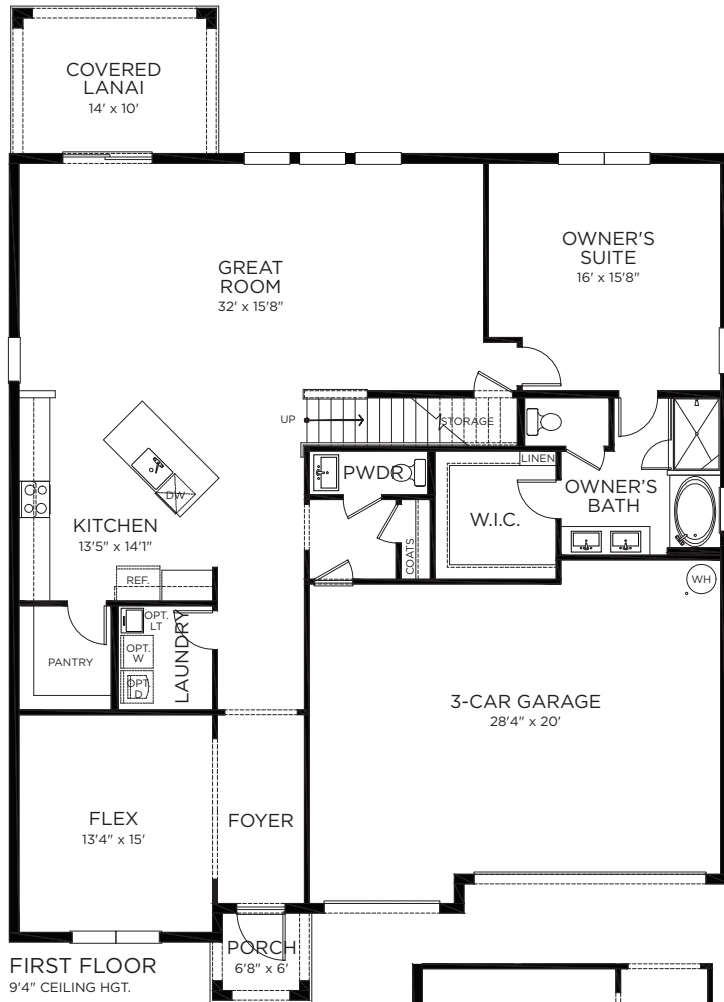
# Dancourt

at Berry Estates

[drhorton.com/sfl](http://drhorton.com/sfl)



Pictures, photographs, features, colors, drawings, floor plans, square footages and sizes are approximate for illustration purposes only and will vary from the homes as built. All drawings are the artist's concept. Florida Certified General Contractor #CGC059394



1st Floor A/C/ Sq. Ft. ....	1,952
2nd Floor A/C/ Sq. Ft. ....	1,732
<b>Total A/C Sq. Ft. ....</b>	<b>3,684</b>
Porch.....	39
Covered Lanai.....	140
3-Car Garage.....	640
<b>Total Sq. Ft. ....</b>	<b>4,503</b>

5 Bedrooms, 3.5 Bathrooms, Flex Room, Upstairs Living  
3-Car Garage





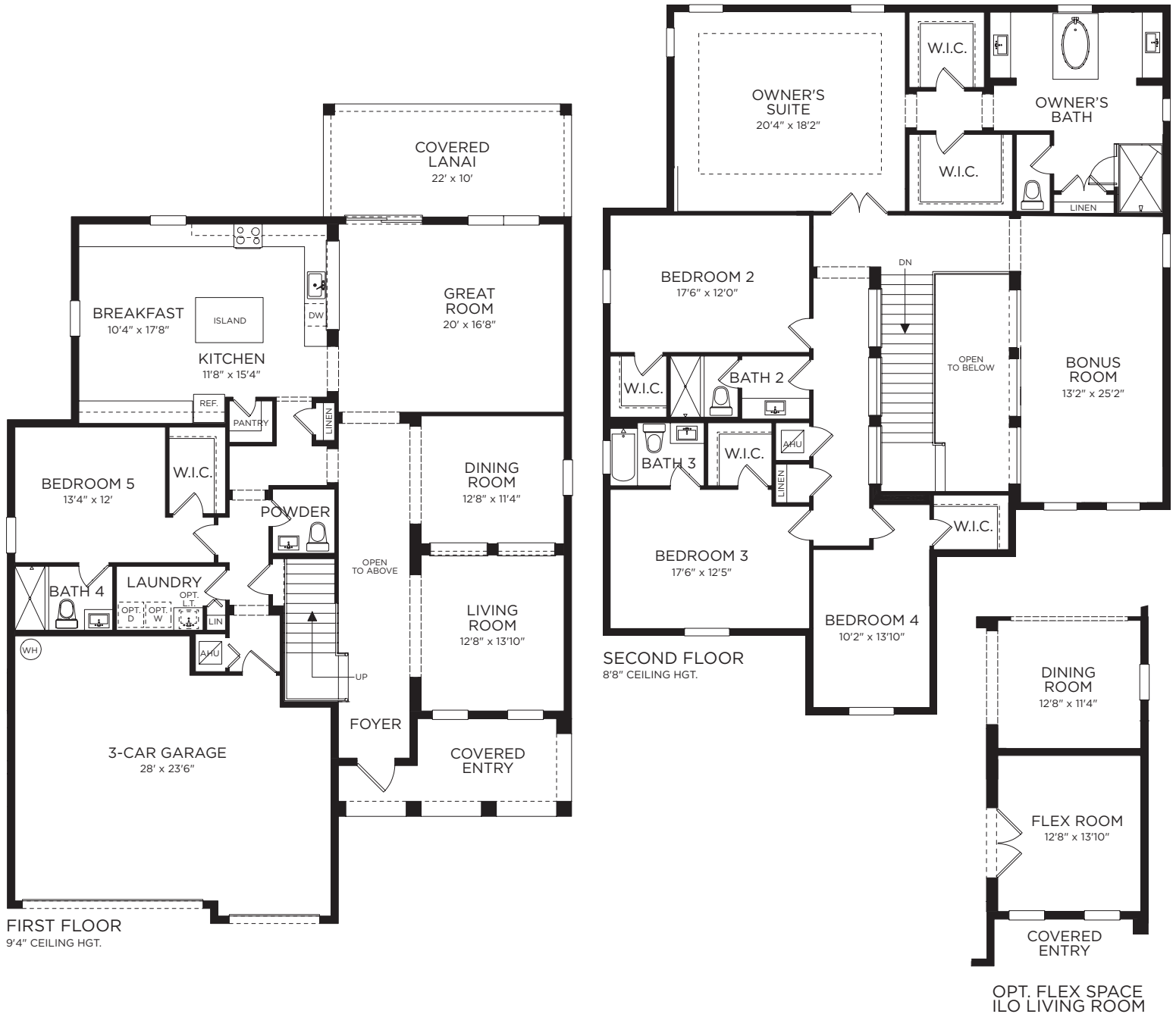
# Yellowstone

at Berry Estates

[drhorton.com/sfl](http://drhorton.com/sfl)



Pictures, photographs, features, colors, drawings, floor plans, square footages and sizes are approximate for illustration purposes only and will vary from the homes as built. All drawings are the artist's concept. Florida Certified General Contractor #CGC059394



1st Floor A/C/ Sq. Ft. ....	2,001
2nd Floor A/C/ Sq. Ft. ....	2,462
<b>Total A/C Sq. Ft. ....</b>	<b>4,463</b>
Covered Entry .....	150
Covered Lanai .....	220
3-Car Garage .....	660
<b>Total Sq. Ft. ....</b>	<b>5,493</b>

5 Bedrooms, 4.5 Bathrooms, Bonus Room, 3-Car Garage



# Berry Estates

## Palm City

### Architectural Artistry

- Architecturally designed exterior elevations with each floorplan
- Stone exterior accents (per plan)
- Reinforced concrete monolithic foundation slab
- Masonry exterior walls on 1st and 2nd floors
- Professionally engineered roof and floor trusses with hurricane clips and bracing
- Baked in color through cement roof tiles
- Durable metal garage door
- Therma-Tru® embossed insulated fiberglass 8' front door
- Low E impact resistant windows and doors
- Fully sodded home sites with professionally designed landscaping
- Hunter® automatic irrigation system
- Paver driveways, entry walkways and covered lanais
- Gutters in front area of driveway and entry walkway
- Exterior weather-proof outlets (G.F.I.)
- Exterior hose bib connection

### Heart of the Home

- Knockdown textured finish on walls and ceilings
- Jeld-Wen® 2-panel interior doors
- Kwikset® satin-nickel keyed entry handleset
- Kwikset® satin-nickel interior door levers throughout
- Vinyl-coated ventilated shelving in all closets
- Daltile® 18" x 18" ceramic tile flooring in first floor living areas
- Mohawk® luxurious wall-to-wall carpeting (installed over dense padding)
- Sherwin Williams® bright white interior paint
- 5 ¼ square style baseboards throughout
- Carrera white window sills

### A Gourmet's Delight

- Frigidaire® Stainless Steel Appliances
  - 25 cu. ft. side by side refrigerator with ice maker
  - Glass top range with microwave above
  - 24" built-in dishwasher
- Quality-crafted, custom designed cabinets with 36" uppers with crown molding
- Granite countertop with built up edge and 4" granite backsplash
- Sterling® single-bowl stainless steel undermount sink
- LED puck lights

### Thoughtful Details

- Uponor® PEX plumbing water lines
- Minimum 50-gallon insulated water heater (per plan)
- Interior washer/dryer hook-up
- Carrier® energy efficient central A/C and heating system
- R-30 blown insulation above all air-conditioned living space
- R-11 BATT insulation between interior wall and garage wall
- R-4.1 insulated exterior masonry walls

### Bathroom Conveniences

- Adult-height custom designed cabinets
- Marble vanity countertops with undermount sink
- Full vanity mirrors
- Daltile® 12" x 12" ceramic tile floors
- Moen® 8" spread faucets in master bath
- Moen® 4" spread faucets in all secondary baths
- Sterling® soaking tub in owner's suite (per plan)
- Daltile® 12" x 12" ceramic tile shower walls
- Framed glass shower enclosure (per plan)
- Gerber® elongated commodes throughout
- Gerber® pedestal sink in powder room (per plan)
- Air King® Exhaust fans

### Technology Standard Features

- Square D® surge protection on all major appliances
- Pre-wired for ceiling fans with switches in all bedrooms and great room
- High speed structured wiring for 4-line phone, video and computer, includes Cat-5 data lines and RG-6 quad shield coaxial cable (per plan)
- BRK® electrical smoke detectors with battery-backup
- BRK® carbon monoxide detector
- Cooper® switches and outlets throughout
- Minimum 150-amp electrical panel with circuit breakers

### Home Is™ Connected

- Qolysys IQ Panel 7" HD Touchscreen with built-in 5MP camera
- Skybell® Trim Plus WiFi video doorbell
- Echo Smart™ & Echo Dot™ speaker with Alexa
- Z Wave™ Thermostat
- Z Wave™ Light Switch
- Z Wave™ Door Lock
- WiFi enabled garage door opener with two transmitters
- Security System with 1 motion detector and 3 door contacts

### D.R. Horton's Personal Touch

- Closing cost incentives (when using DHI Mortgage preferred lender for financing & DHI Title)\*
- Personalized New Homeowner Orientation
- D.R. Horton 1-Year Warranty
- 10-Year RWC™ warranty to protect your investment
- 10-Year Carrier® limited warranty
- 3rd party home inspections

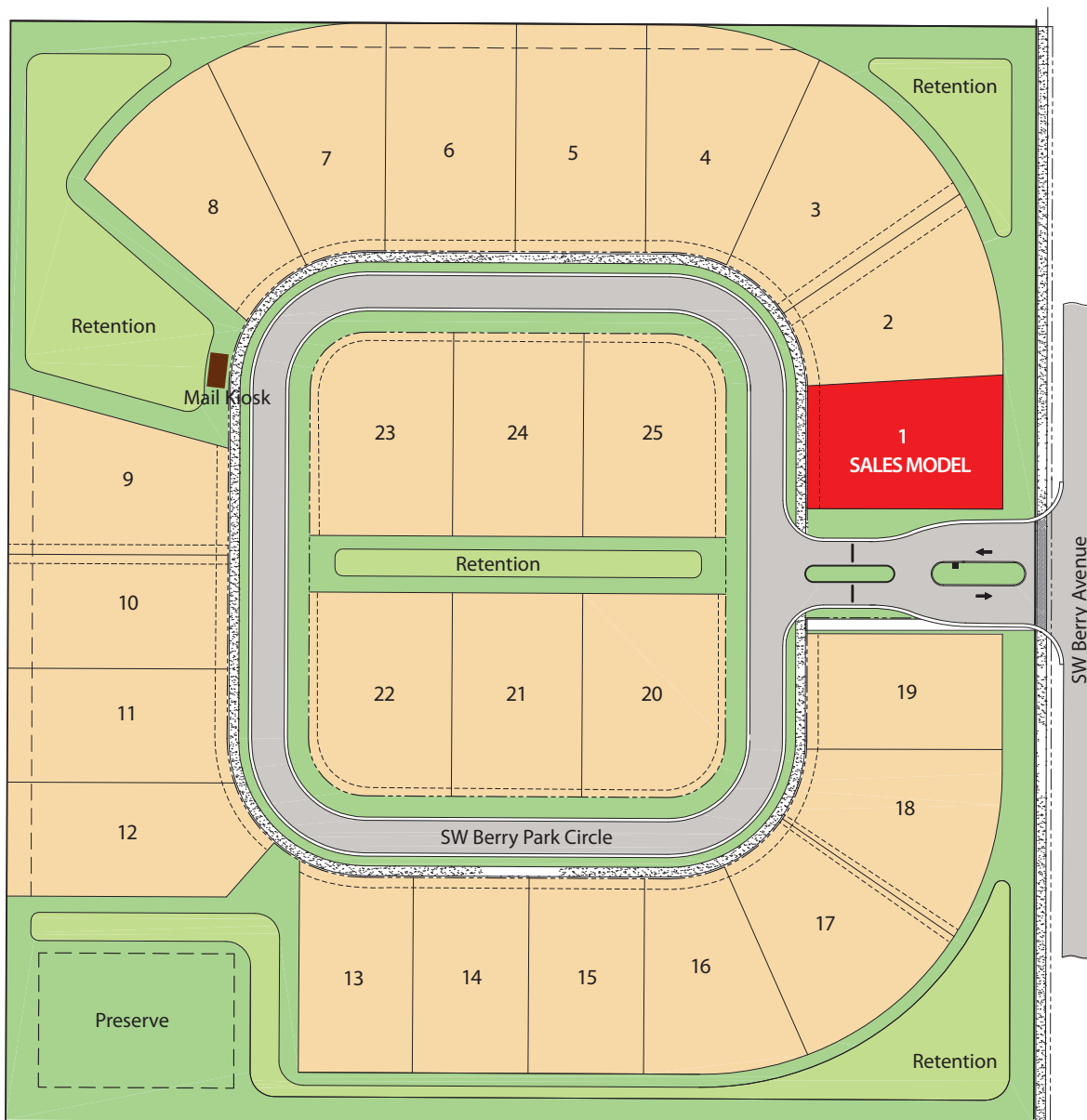
Berry Estates • 2451 SW Berry Park Circle, Palm City, FL 34990 • (855) 305-9094 • [drhorton.com/sfl](http://drhorton.com/sfl)



\*Not all buyers will qualify. Not redeemable for cash. All terms and conditions subject to credit approval, market changes and availability. Buyers are not required to finance through preferred lender as a condition of purchase or access to settlement services. Included features subject to change without prior notice or obligation, as a result, please consult with one of our sales representatives for the latest community information. Florida Certified General Contractor #CGC059394

# Berry Estates

Palm City



Berry Estates • 2451 SW Berry Park Circle, Palm City, FL 34990 • (855) 305-9094 • [drhorton.com/sfl](http://drhorton.com/sfl)



This map is a schematic for exhibition purposes only and does not represent the exact location or configuration of site features, lot lines, easements, amenities, units, buildings or details shown thereon. All homesite sizes are approximate and may vary. All information on this map, including availability and delivery dates is subject to change without notice or obligation. Florida Certified General Contractor #CGC059394





## BERRY ESTATES **Association Fees**

**Your Community Homeowners' Association Provides:**

- Professional Property Management
- Insurance for Common Areas
- Gate Maintenance
- Lawn Maintenance and Landscaping for Home and Common Areas

**\$210.00**  
**per month**

Berry Estates • 2451 SW Berry Park Circle, Palm City, FL 34990 • (855) 305-9094 • [drhorton.com/sfl](http://drhorton.com/sfl)

Effective 1/1/19 - D.R. Horton is equal housing opportunity builder. Aforementioned fee is based on 2018 budget and is subject to change. Home and community information including features, amenities and dues are subject to change without notice or obligation. Florida Certified General Contractor #CGC059394